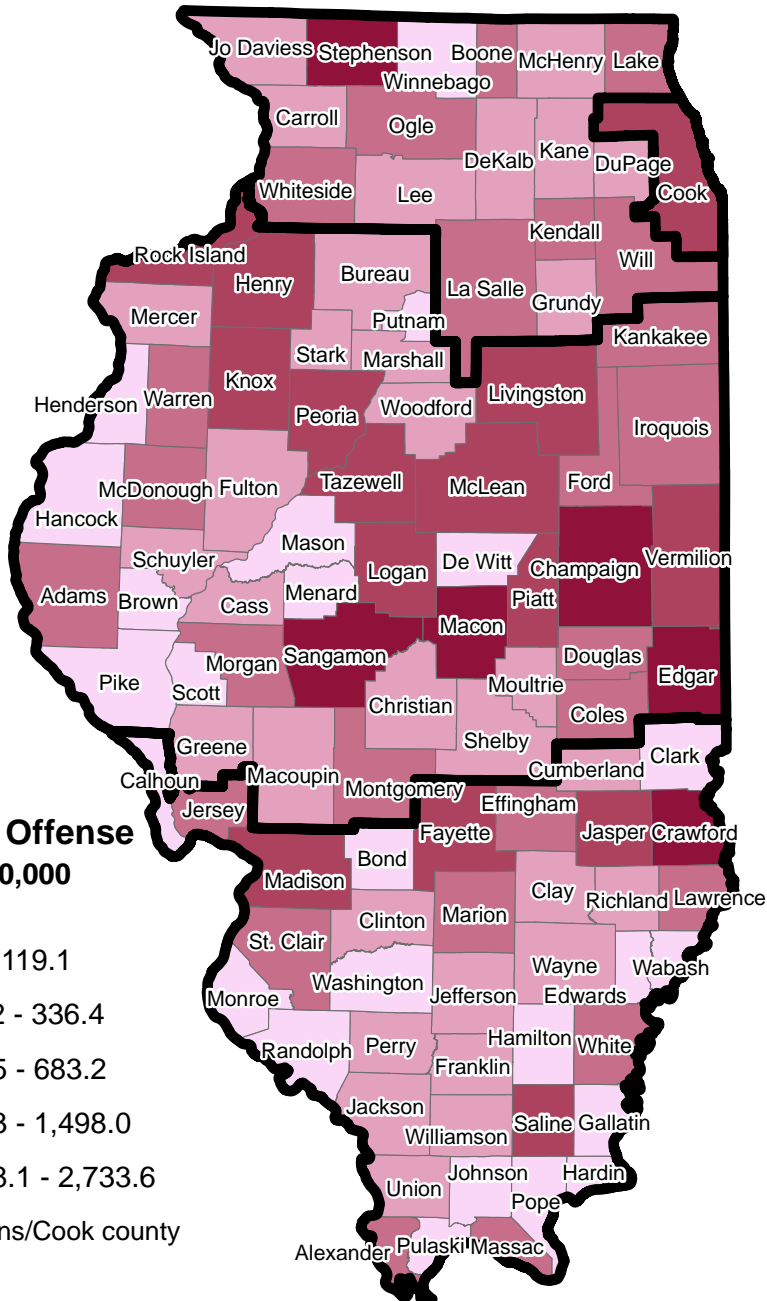
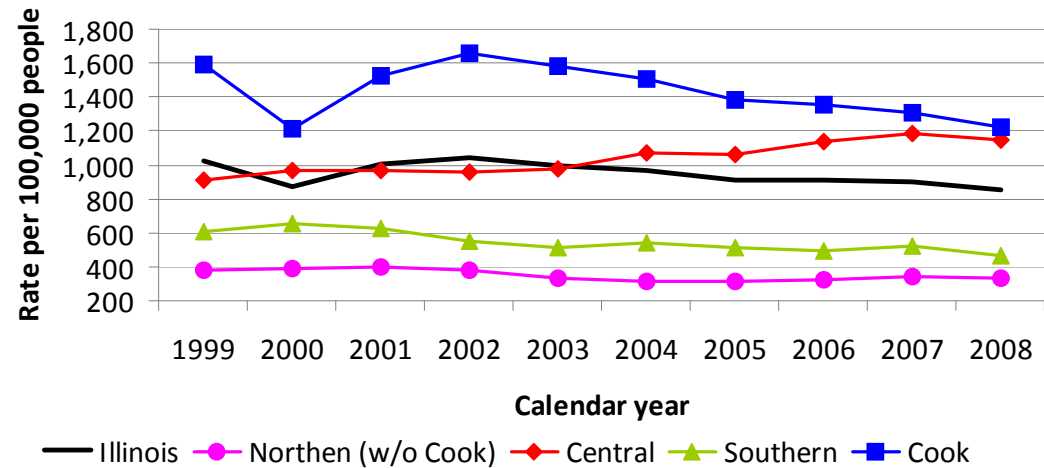


Domestic Offense Rate Per 100,000 People CY 2008



Domestic Offense Rate per 100,000 People CY 1999 – 2008



- Domestic-related offenses, as reported to the Illinois Uniform Crime (I-UCR) program, are defined as crimes committed by family or household members who share or formerly shared a common dwelling, and persons who have or allegedly have a child in common. They can include property as well as personal injury offenses. More information on I-UCR domestic crimes can be found in the latest edition of Crime in Illinois.
- In 2008, there were 109,089 reported domestic-related offenses reported in Illinois. The map shows the distribution of these offenses by county, in terms of the rate per 100,000 persons.
- From 1999 through 2008, the reported domestic-related offense rate in Illinois decreased 17 percent (from 1,023 per 100,000 persons to 849 per 100,000 persons). The decrease from 1999 to 2000 shown in the chart above was due a decrease of almost 20,000 cases reported by the Chicago Police Department.
- From 1999 through 2008, the greatest decrease in the domestic-related offense rate was in the Southern region (24 percent), followed a 23 percent decrease in Cook County, and a 13 percent decrease in the Northern region outside of Cook County. There was a 25 percent increase in the Central region. (See map for geographic regions).
- In 2008, 58.4 percent of domestic-related offenses involved an intimate partner, 12.4 percent were against children, 8.5 percent were against a parent or grandparent, and 5.7 percent were against a sibling. These data are for offenses reported outside Chicago.
- Of the 60,044 domestic-related offenses reported outside of Chicago in 2008, 71.1 percent involved personal weapons (hands, fists, feet), while 20.6 percent did not involve any weapon. Only 2.1 percent of offenses involved cutting instruments and less than one percent involved a firearm.