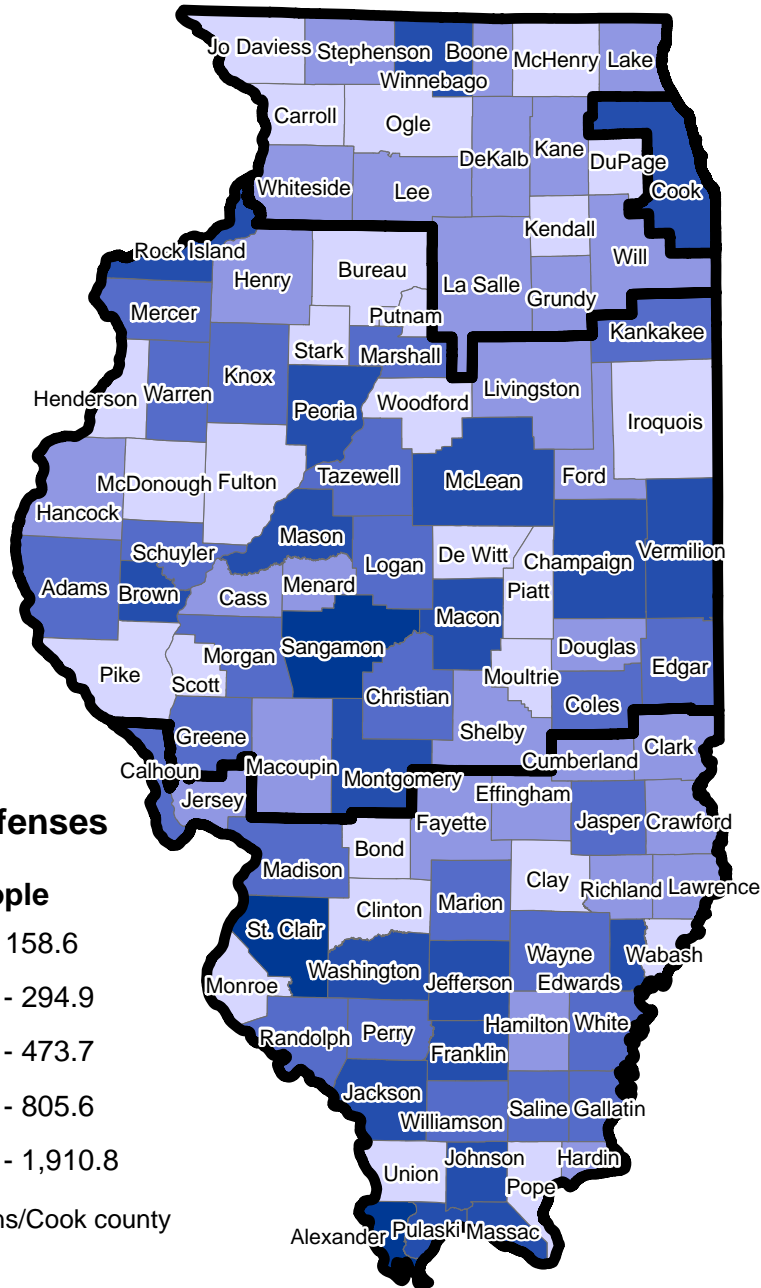
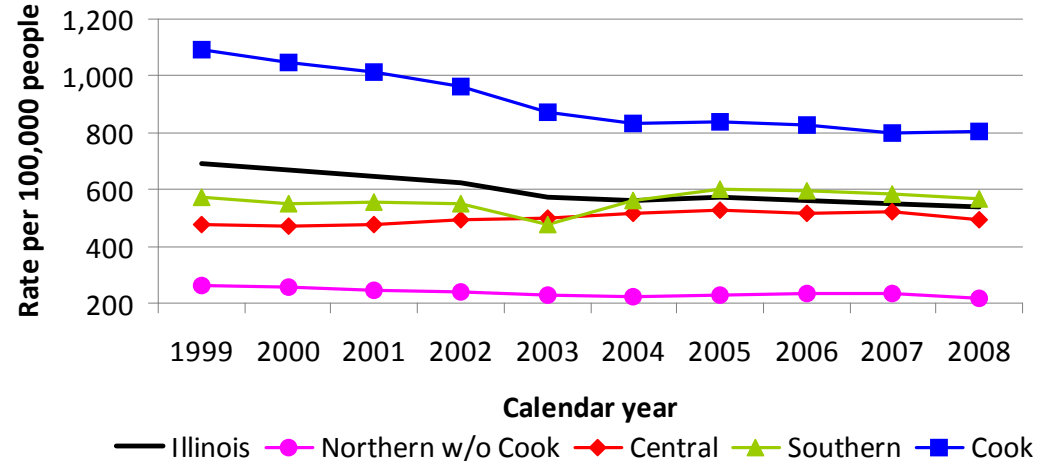


I-UCR Violent Offense Rate per 100,000 People CY2008



I-UCR Violent Offense Rate per 100,000 People CY1999-2008



- The violent Index offenses include crimes reported to police in four major categories: murder, criminal sexual assault, robbery and aggravated assault. Definitions of these offenses can be found in the Illinois State Police Crime in Illinois Annual Report.
- In 2008, there were 69,441 reported violent Index offenses in Illinois. The map above shows the distribution of these offenses by county, in terms of rate per 100,000 persons.
- Fifty-six percent of all reported violent Index offenses in Illinois were aggravated assaults, 35 percent were robberies, eight percent were criminal sexual assaults, and one percent were murders.
- In Illinois, the violent Index offense rate decreased 22 percent from 1999 through 2008 (from 694 per 100,000 persons to 541 per 100,000 persons).
- As a comparison, the rate of reported violent Index offenses in the United States decreased 13 percent (from 523 per 100,000 to 455 per 100,000 persons in 2008).
- From 1999 through 2008, the violent Index offense rate decreased 26 percent in Cook County, 16 percent in the Northern region outside Cook County, two percent in the Southern region, and increased three percent in the Central region. (See map for these geographic regions).
- In Illinois as a whole, the aggravated assault rate per 100,000 persons decreased 28 percent from 1999 through 2008, the murder rate decreased 25 percent, the criminal sexual assault rate decreased 14 percent, and the robbery rate decreased 13 percent.