

120 S. Riverside Plaza,
Suite 1016
Chicago, Illinois 60606

Tel: (312) 793-8550
Fax: (312) 793-8422
TDD: (312) 793-4170

www.icjia.state.il.us

Prepared by

**The Research and
Analysis Unit**

**Rod R. Blagojevich
Governor**

**Sheldon Sorosky
Chairman**

**Lori G. Levin
Executive Director**

**December
2004**

Research and Program Evaluation in Illinois: The Extent and Nature of Drug and Violent Crime in Illinois' Counties



A Profile of the Boone County Criminal and Juvenile Justice Systems

This project was supported by Grant # 02-DB-MU-0017, awarded to the Illinois Criminal Justice Information Authority by the Bureau of Justice Assistance, Office of Justice Programs, U.S. Department of Justice. The Assistant Attorney General, Office of Justice Programs, coordinates the activities of the following programs, offices and bureaus: Bureau of Justice Assistance, Bureau of Justice Statistics, National Institute of Justice, Office of Juvenile Justice and Delinquency Prevention, and the Office for Victims of Crime. Points of view or opinions contained within this document are those of the authors and do not necessarily represent the official position or policies of the U.S. Department of Justice.

Illinois Criminal Justice Information Authority
120 S. Riverside Plaza, Suite 1016
Chicago, Illinois 60606-3997
Telephone (312) 793-8550
Telefax (312) 793-8422
World Wide Website <http://www.icjia.state.il.us>

ACKNOWLEDGMENTS

A number of organizations and individuals put a great deal of effort into the development of this document. The Authority's Research and Analysis Unit is very grateful for the assistance provided by the following organizations:

Administrative Office of the Illinois Courts
Illinois Department of Children and Family Services
U.S. Department of Commerce, Bureau of the Census
Illinois Department of Corrections
Illinois State Police

This document was put together by the following Research and Analysis Unit staff:

Sharyn Adams
Jessica Ashley
Robert Bauer
Christopher Humble
Christine Martin
Adriana Perez
Idetta Phillips
Michelle Repp

CONTENTS

Section	Page Number
I. Introduction	1
II. Law Enforcement Activities in Boone County	3
III. Adult and Juvenile Court Activity in Boone County	11
IV. Jail Populations in Boone County	19
V. Indicators of Child Abuse and Neglect in Boone County	21
VI. Appendix I (Map of Illinois Counties within a Metropolitan Statistical Area).....	24
VII. Bibliography	25

LIST OF FIGURES

Figure	Page Number
Figure 1. Total Violent Index Offense Rates in Boone and Other Urban Counties.....	4
Figure 2. Total Property Index Offense Rates in Boone and Other Urban Counties.....	5
Figure 3. Index Arrest Rate in Boone and Other Urban Counties	6
Figure 4. Drug Arrests in Boone County.....	7
Figure 5. Drug Arrest Rates in Boone and Other Urban Counties.....	8
Figure 6. Cannabis Seized in Boone County	9
Figure 7. Cocaine and Crack Cocaine Seized in Boone County.....	10
Figure 8. Felony and Misdemeanor Filings in Boone County.....	12
Figure 9. Felony Filing Rates in Boone and Other Urban Counties	13
Figure 10. Juvenile Delinquency Petitions Filed and Adjudicated in Boone County	14
Figure 11. Sentences Imposed on Felons Convicted in Boone County	15
Figure 12. IDOC New Court Commitments from Boone County, by Offense Type	16
Figure 13. Juvenile Court Commitments to the IDOC Juvenile Division from Boone County	17
Figure 14. Total Adult and Juvenile Active Probation Cases in Boone County.....	18
Figure 15. Average Daily Population of the Boone County Jail	19
Figure 16. Average Daily Jail Population Rates, Boone and Other Urban Counties.....	20
Figure 17. Reported and Verified Cases of Substance-Exposed Infants, Boone County.....	21
Figure 18. Reported and Verified Cases of Child Abuse and Neglect in Boone County.....	22
Figure 19. Rate of Verified Cases of Child Abuse and Neglect, Boone and Other Urban Counties.....	23

FOREWORD

The Illinois Criminal Justice Information Authority is a state agency created in 1983 to promote community safety by providing public policymakers, criminal justice professionals and others with information, tools and technology needed to make effective decisions that improve the quality of criminal justice in Illinois. The Authority provides an objective system-wide forum for identifying critical problems in criminal justice, developing coordinated and cost-effective strategies, and implementing and evaluating solutions to those problems. The specific powers and duties of the Authority are delineated in the Illinois Criminal Justice Information Act (Illinois Compiled Statutes, Ch. 20, Sec. 393/7). Two of the Authority's many responsibilities are serving as a clearinghouse of information and research on criminal justice and undertaking research studies to improve the administration of criminal justice.

Since 1989, the Authority's Research and Analysis Unit has received funds under the federal Anti-Drug Abuse Act of 1988 to document the extent and nature of drug and violent crime in Illinois and the criminal justice system's response to these offenses. As a result of these efforts, the Authority has amassed a large amount of data measuring the extent and nature of drug and violent crime in Illinois and the impact these crimes have had on the criminal justice system. To put this information into the hands of Illinois' criminal justice policymakers in a useful summary format, the Authority's Research and Analysis Unit has developed profiles of the criminal justice system for each county in Illinois. In 1994, the Illinois Criminal Justice Information Authority produced a series of reports detailing criminal justice system activity levels for each of Illinois' 102 counties. As a result of the positive response by local criminal justice officials, in 1996 the Authority updated and expanded the scope of these reports to reflect current criminal and juvenile justice activity. It is hoped that these 2004 updated reports will be as valuable, if not more, than the original versions. In addition to providing policymakers with an overview of activities across the components of the justice system in their county (law enforcement, courts and corrections), the profiles also provide perspective by including trends experienced in counties with similar population sizes.

While the data presented in this report are by no means inclusive of all indicators, they do provide a general overview of crime and the criminal justice system's response. In addition, these data are readily available and consistently defined through existing statewide data collection mechanisms.

The information presented in this profile has been provided to the Authority by a number of state agencies, specifically: the Illinois State Police, the Administrative Office of the Illinois Courts, the Illinois Department of Corrections, and the Illinois Department of Children and Family Services. The support and cooperation of these agencies and their staffs have helped make this report an informative and timely source of information on the activities of the criminal justice system in Illinois.



The Illinois Criminal Justice Information Authority's
Web-based clearinghouse of criminal justice data available at:

<http://www.icjia.state.il.us>.

I. Introduction

Boone County, located in northern Illinois, covers an area of 514 square miles and had a 2003 population of 46,477, according to estimates by the U.S. Department of Commerce's Bureau of the Census. Using these figures, Boone County was the 10th smallest county in Illinois geographically, but 32nd largest in terms of population. Combining these two measures, Boone County had the 17th highest population density per square mile among Illinois' 102 counties.

As with the previous reports, information specific to Boone County is presented in comparison with similar counties. To provide more useful comparisons, counties have been separated into four types; 1) Cook County, 2) Collar counties, 3) urban counties (outside of Cook and the Collar counties), and 4) rural counties. Because of its size, Cook County is compared to the rest of the state. The Collar counties are the five that border Cook County (DuPage, Lake, Kane, McHenry, and Will). Urban and rural counties are defined by whether or not they lay within a Metropolitan Statistical Area (MSA) (Appendix 1, page 24). Based on these definitions, there are 36 counties in Illinois that are part of a MSA (Cook, Collar, and urban counties) and 66 counties that are not part of a MSA (in other words, rural).

Recent changes to the standard definitions of MSAs have affected the classification of several Illinois counties. The United States Office of Management and Budget (OMB) defines metropolitan and micropolitan statistical areas according to published standards that are applied to Census Bureau data. The general concept of a metropolitan or micropolitan statistical area is that of a core area containing a substantial population nucleus, together with adjacent communities having a high degree of economic and social integration with that core. Currently defined metropolitan and micropolitan statistical areas are based on the application of 2000 standards to 2000 decennial census data and were announced by OMB on June 6, 2003.

Standard definitions of metropolitan areas have changed over time. The term "metropolitan area" (MA) was adopted in 1990 and referred collectively to metropolitan statistical areas (MSAs), consolidated metropolitan statistical areas (CMSAs), and primary metropolitan statistical areas (PMSAs). More recently, the term "core based statistical area" (CBSA) became effective in 2000 and refers collectively to metropolitan and micropolitan statistical areas.

The 2000 standards require that each CBSA must contain at least one urban area of 10,000 or more population. Each metropolitan statistical area must have at least one urbanized area of 50,000 or more inhabitants. Each micropolitan statistical area must have at least one urban cluster of at least 10,000 but less than 50,000 population.

Under the standards, the county (or counties) in which at least 50 percent of the population resides within urban areas of 10,000 or more population, or that contain at least 5,000 people residing within a single urban area of 10,000 or more population, is identified as a "central county" (counties). Additional "outlying counties" are included in the CBSA if they meet specified requirements regarding residents commuting to or from the central counties.

Changes in the definitions of these statistical areas since the 1950 census have consisted chiefly of: 1) the recognition of new areas as they reached the minimum required city or urbanized area population, and 2) the addition of counties to existing areas due to new decennial census data. In some instances, formerly separate areas have been merged, components of an area have been transferred from one area to another, or components have been dropped from an area. The large majority of changes have taken place on the basis of decennial census data.

Because of these historical changes in geographic definitions, users must be cautious in comparing data for these statistical areas from different dates. For more information, contact the Population Distribution Branch at (301) 763-2419 (U. S. Census Bureau).

Based on these characteristics, Boone County is one of Illinois' 30 urban counties. Throughout this report, the criminal justice activity trends experienced in Boone County will be compared to those trends experienced in the other urban counties. This comparison will be realized through the calculation of rates for the activities being analyzed, with the number per 100,000 population as the format for all the rates.

II. Law Enforcement Activities in Boone County

One of the most commonly used indicators of the level of crime in a particular jurisdiction is the number of *Index offenses* reported to the police. There are eight separate offenses which constitute the Crime Index, including murder, criminal sexual assault, robbery, aggravated assault (violent Index offenses), burglary, theft, motor vehicle theft, and arson (property Index offenses). Although these eight offenses do not account for all crimes reported to the police, they are considered to be the most serious, frequent, pervasive, and consistently defined by different law enforcement agencies.

An indicator of the workload that law enforcement agencies place on other components of the justice system is the number of arrests made by police, including those for violent and property Index offenses and drug offenses. Unlike offenses, which are what police must respond to, arrests represent those offenders who may eventually be processed through other components of the justice system, including the courts, county jails, and state and local correctional programs.

In addition to local law enforcement agencies, the State Line Area Narcotics Team (SLANT) also serves Boone County. Throughout most of the period analyzed, there were 21 Metropolitan Enforcement Groups (MEGs) and task forces operating in Illinois. A county is considered to be served by a MEG or task force if at least one law enforcement agency within that county participated in that MEG or task force either by providing personnel or financial resources.

To learn more about the drug enforcement activities of the State Line Area Narcotics Team and Illinois' other MEGs and task forces, profiles of each of the units were developed by the Authority's Research and Analysis Unit and are available through the Authority's Criminal Justice Information Clearinghouse or can be downloaded from the Authority's Website at www.icjia.state.il.us.

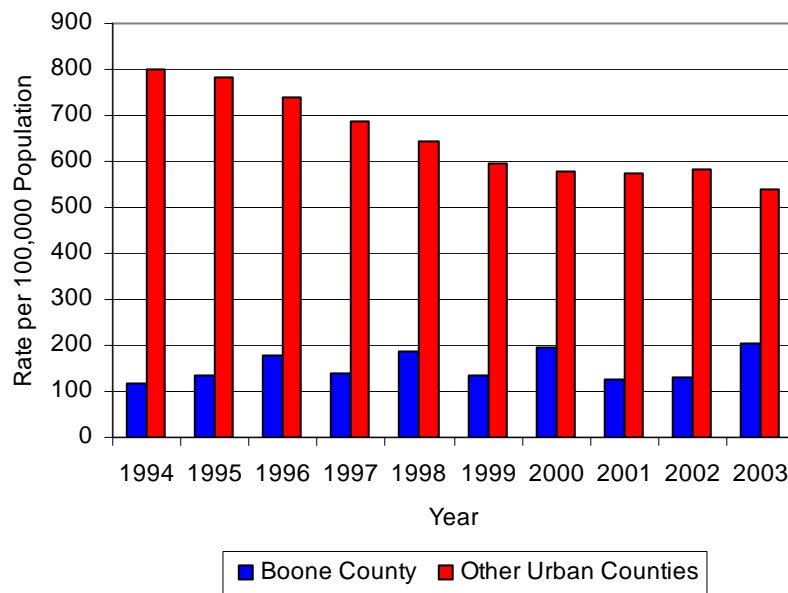
Violent Index Offenses Reported to the Police in Boone County

The number of violent Index offenses reported to the police more than doubled in Boone County between 1994 and 2003, from 42 to 95. As in previous years and in most other counties, aggravated assault offenses accounted for the majority (57 percent) of violent Index offenses reported in Boone County in 2003.

Between 1994 and 2003, the violent Index offense rate in Boone County increased 72 percent, from 119 to 204 offenses per 100,000 population. Conversely, during that same period, the violent Index offense rate in the other urban counties decreased 33 percent, from 802 to 539 offenses per 100,000 population (Figure 1). The 2003 violent Index offense rate in Boone County was 62 percent lower than the rate in the other urban counties.

Figure 1

Total Violent Index Offense Rates in Boone and Other Urban Counties



Source: ICJIA calculation using Illinois State Police and U.S. Census Bureau data

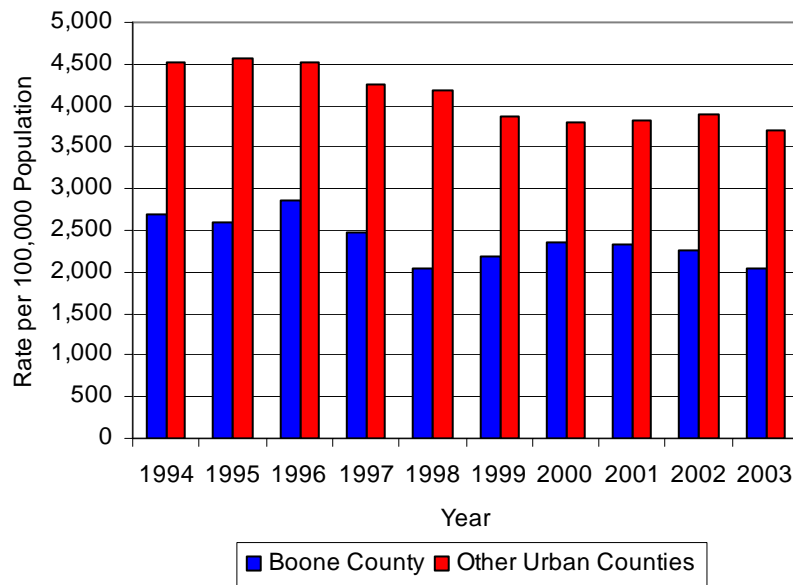
Property Index Offenses Reported to the Police in Boone County

Between 1994 and 2003, the number of property Index offenses reported to the police in Boone County remained relatively stable, increasing slightly from 951 to 955. Thefts accounted for 75 percent of all property Index offenses reported in Boone County during 2003.

Between 1994 and 2003, the property Index offense rate in Boone County decreased 24 percent, from 2,697 to 2,055 offenses per 100,000 population. In the other urban counties, the property Index offense rate decreased 18 percent, from 4,513 to 3,704 offenses per 100,000 population (Figure 2). The 2003 property Index offense rate in Boone County was 45 percent lower than the rate in the other urban counties.

Figure 2

Total Property Index Offense Rates in Boone and Other Urban Counties



Source: ICJIA calculation using Illinois State Police and U.S. Census Bureau data

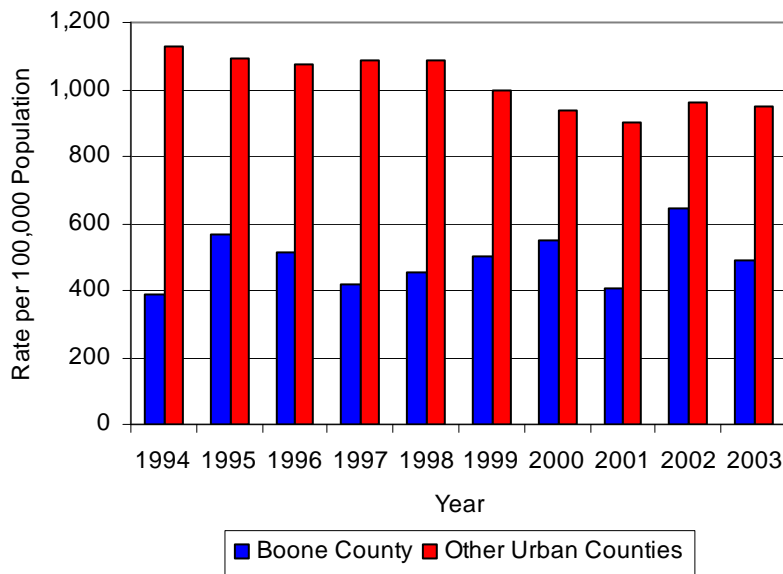
Index Arrests by Boone County Law Enforcement Agencies

Between 1994 and 2003, arrests for total Index offenses by law enforcement agencies in Boone County increased 67 percent, from 136 to 227. The majority of Index arrests were for property Index offenses. Of the 227 Index arrests made in Boone County during 2003, 27 percent were for violent Index crimes and 73 percent were for property Index crimes. Arrests for theft and aggravated assault accounted for the majority of property and violent Index arrests in Boone County during 2003. Of all violent Index arrests, 65 percent were arrests for aggravated assault, while thefts accounted for 79 percent of all property Index arrests.

Between 1994 and 2003, the Index arrest rate in Boone County increased 27 percent, from 386 to 488 arrests per 100,000 population. During the same period, the Index arrest rate in the other urban counties decreased 16 percent, from 1,129 to 950 arrests per 100,000 population (Figure 3). In 2003, Boone County's Index arrest rate was 49 percent lower than the Index arrest rate in the other urban counties.

Figure 3

Index Arrest Rates in Boone and Other Urban Counties



Source: ICJIA calculation using Illinois State Police and U.S. Census Bureau data

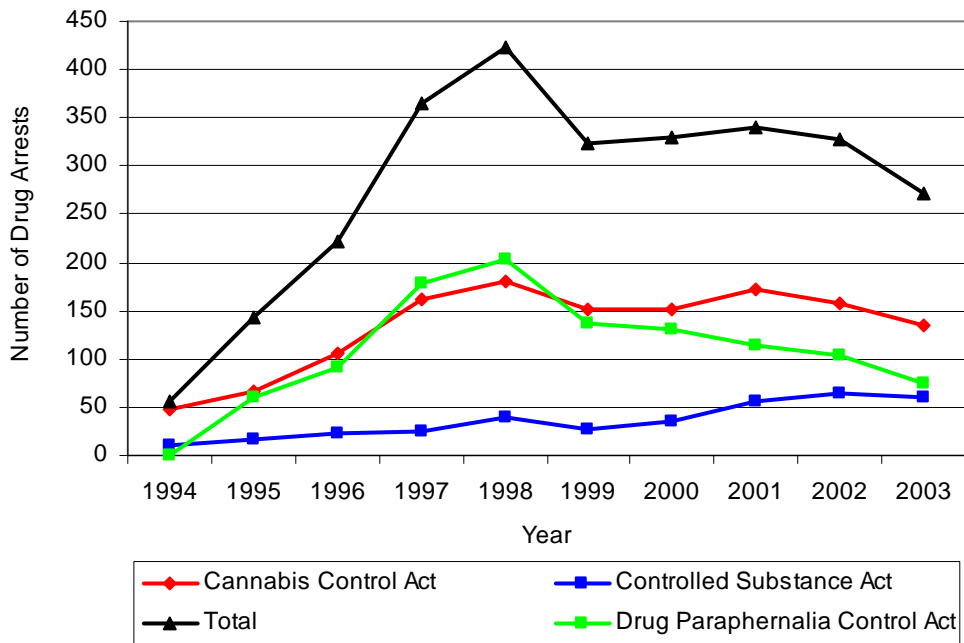
Drug Offense Arrests in Boone County

Between 1994 and 2003, arrests for total drug offenses (including violations of Illinois' Cannabis Control Act, Controlled Substances Act, Drug Paraphernalia Control Act, and the Hypodermic Syringes and Needles Act) increased nearly five-fold in Boone County, from 57 to 272 (Figure 4). Similar to other counties, total drug arrests in Boone County remained relatively stable between 1983 and 1991, before increasing annually nearly every year thereafter. Drug Paraphernalia Control Act violations accounted for the majority of the increase in total drug arrests. Between 1994 and 2003, the number of arrests for violation of the Drug Paraphernalia Control Act increased dramatically, from zero arrests in 1994 to 75 in 2003, or in other words, 28 percent of all drugs arrests in 2003.

For the period analyzed between 1994 and 2003, arrests for violations of Illinois' Cannabis Control Act (which prohibits the possession, sale, and cultivation of cannabis) in Boone County have out-numbered arrests for violations of the Controlled Substances Act (which prohibits the possession, sale, distribution, or manufacture of all other illegal drugs such as cocaine and opiates). Between 1994 and 2003, the number of arrests for violations of the Cannabis Control Act in Boone County nearly tripled, from 47 to 135. Similarly, arrests for violations of the Controlled Substances Act also increased dramatically, from ten to 61 (Figure 4).

Figure 4

Drug Arrests in Boone County

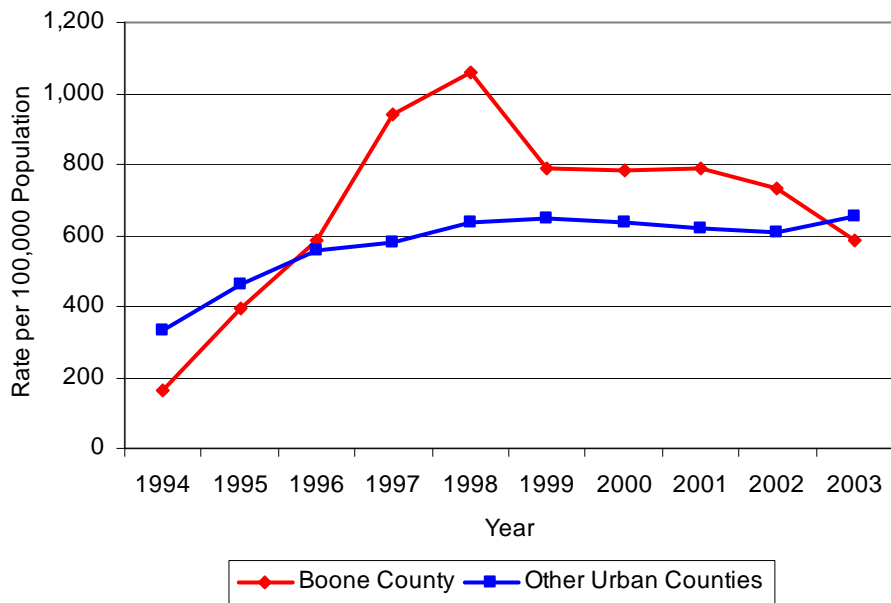


Source: Illinois State Police

Between 1994 and 2003, the arrest rate for all drug law violations in Boone County more than tripled, from 162 to 585 per 100,000 population. The total drug arrest rate in the other urban counties nearly doubled during the same period, from 331 arrests per 100,000 population in 1994 to 655 arrests per 100,000 population in 2003, a 98 percent increase (Figure 5). In 2003, the drug arrest rate in Boone County was 11 percent lower than the rate in the other urban counties.

Figure 5

Drug Arrest Rates in Boone and Other Urban Counties



Source: ICJIA calculation using Illinois State Police and U.S. Census Bureau data

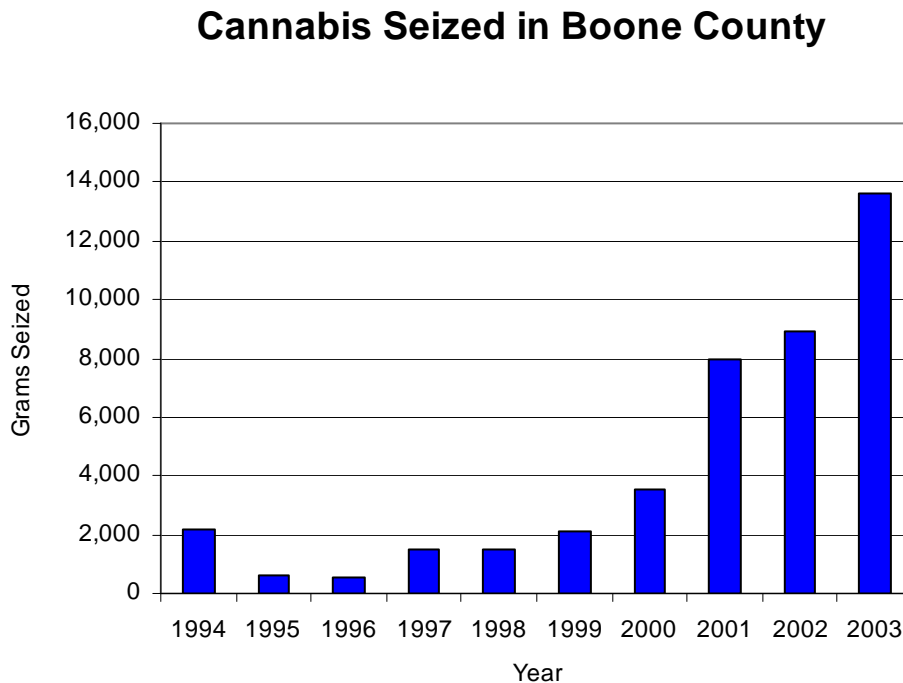
Drugs Seized in Boone County

Drugs seized by law enforcement agencies are another indicator of the extent and nature of the illegal drug trade in a jurisdiction. When illegal drugs are seized by law enforcement agencies in Illinois, they are submitted to a crime lab for analysis. Most agencies submit drugs to one of the Illinois State Police crime labs. These labs record the quantity of drugs submitted from each county. This section discusses the quantities of illegal drugs seized and submitted to the Illinois State Police from law enforcement agencies in Boone County.

Cannabis Seized in Boone County

Cannabis accounts for the majority of drugs seized in Boone County and in most Illinois jurisdictions. Between 1994 and 2003, the quantity of cannabis seized in Boone County increased more than six-fold, from 2,176 grams to a period high of 13,586 grams (Figure 6). During the period analyzed, the quantity of cannabis seized in the other urban counties decreased 62 percent, from 1,309,590 grams in 1994 to 501,048 grams in 2003.

Figure 6



Source: Illinois State Police

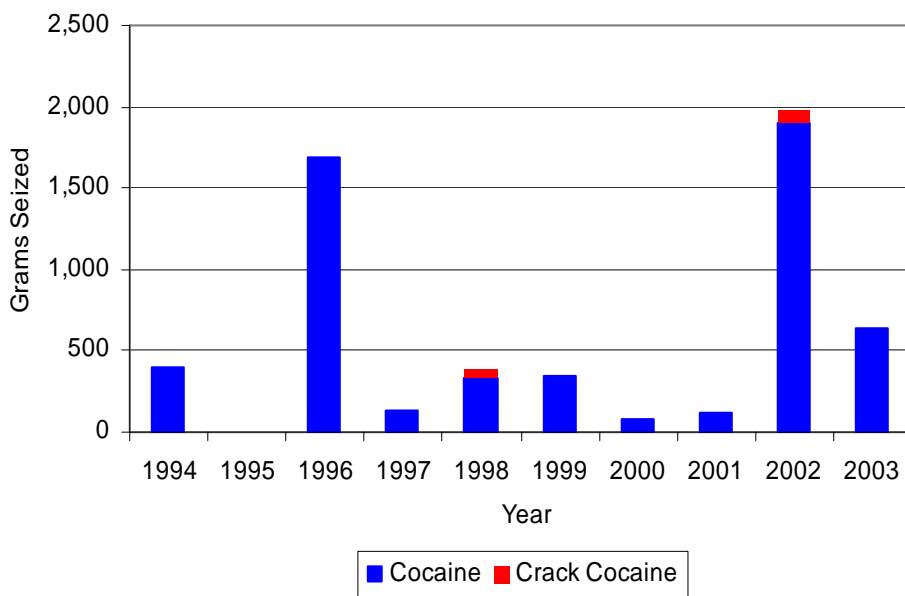
Between 1994 and 2003, the cannabis seizure rate in Boone County increased nearly five-fold, from 6,171 grams per 100,000 population in 1994 to 29,232 grams in 2003. The cannabis seizure rate in the other urban counties decreased 63 percent, from 51,805 grams per 100,000 population in 1994 to 19,090 grams in 2003. In 2003, the cannabis seizure rate in Boone County was 53 percent higher than the rate in other urban counties.

Cocaine and Crack Cocaine Seized in Boone County

The quantity of powder cocaine seized increased, while the quantity of crack cocaine seized in Boone County remained the same between 1994 and 2003. The quantity of powder cocaine seized increased 61 percent, from 399 grams in 1994 to 643 grams in 2003 (Figure 7). Crack cocaine accounted for a relatively small portion of all cocaine seized in Boone County. The quantity of crack cocaine seized remained unchanged at zero grams in both 1994 and 2003.

Figure 7

Cocaine and Crack Cocaine Seized in Boone County



Source: Illinois State Police

The quantity of powder cocaine and crack cocaine seized in the other urban counties decreased during the period analyzed. Between 1994 and 2003, the amount of powder cocaine seized decreased 25 percent, from 48,015 grams to 35,391 grams in the other urban counties, while the quantity of crack cocaine seized decreased 45 percent, from 11,439 grams to 6,290 grams. In 2003, 1,383 grams of powder cocaine per 100,000 population were seized in Boone County, 1 percent higher than the rate of 1,369 grams of powder cocaine per 100,000 population seized in the other urban counties.

III. Adult and Juvenile Court Activity in Boone County

Although Illinois has one of the best court reporting systems in the country, the Administrative Office of the Illinois Courts only collects information regarding the aggregate number of court filings, dispositions, and probation caseloads. Currently, there are no statewide data available on court filings, dispositions, and convictions by offense type. However, detailed offense data are available from the Illinois Department of Corrections for those convicted felons sentenced to prison.

Trends in the number of delinquency petitions filed and adjudicated in juvenile court are also presented. Illinois statutes define delinquency offenses as those committed by someone younger than 17 years old that would be considered crimes if committed by someone 17 years of age or older.

In Illinois, county probation departments are overseen by the Administrative Office of the Illinois Courts' Probation Division. This section also presents data on active misdemeanor and felony adult caseloads and the number of juveniles under the supervision of the probation departments in Boone County and the other urban counties.

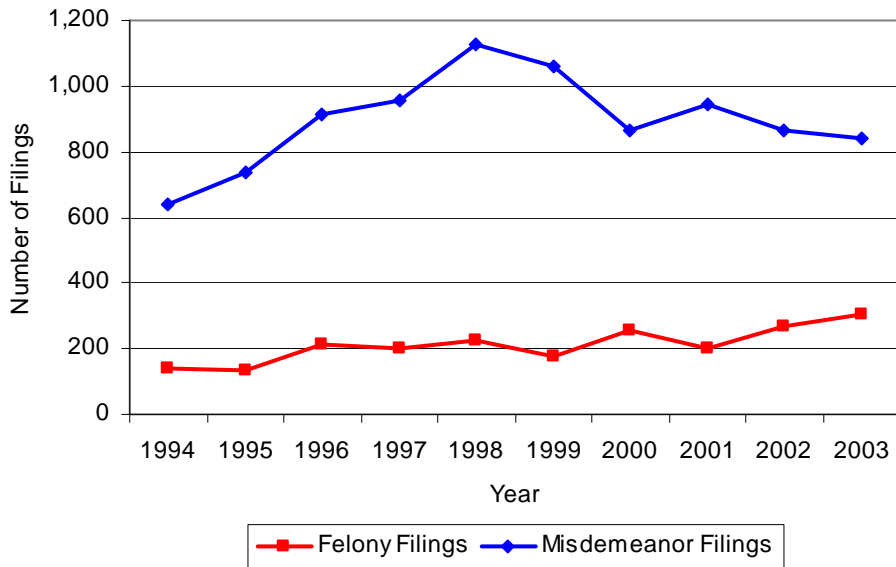
Misdemeanor and Felony Filings in Boone County

The Administrative Office of the Illinois Courts reports data on criminal court cases in two categories: misdemeanors and felonies. After screening a case and deciding it warrants further action, the state's attorney must file formal charges in court. Misdemeanor cases are less serious than felonies and can be punished by a probation sentence of one year or less and less than one year of incarceration. Felony cases, on the other hand, are more serious and can be punished by a probation term up to four years and incarceration for more than one year. When comparing the number of filings across time and across counties, it should be noted that differences in reporting practices exist. For example, when two or more defendants are involved in a single case, some state's attorneys file a single case charging all defendants, while others file a separate case for each suspect.

In 2003, felony and misdemeanor court filings accounted for 7 percent of all filings in Boone County's courts (civil, traffic, family, and other). Between 1994 and 2003, the number of felony filings in Boone County more than doubled, from 142 to 204 (Figure 8). During the same period, misdemeanor filings also increased, increasing 32 percent from 638 in 1994 to 843 in 2003. In 2003, misdemeanor filings out-numbered felony filings by more than four to one.

Figure 8

**Felony and Misdemeanor Filings
in Boone County**

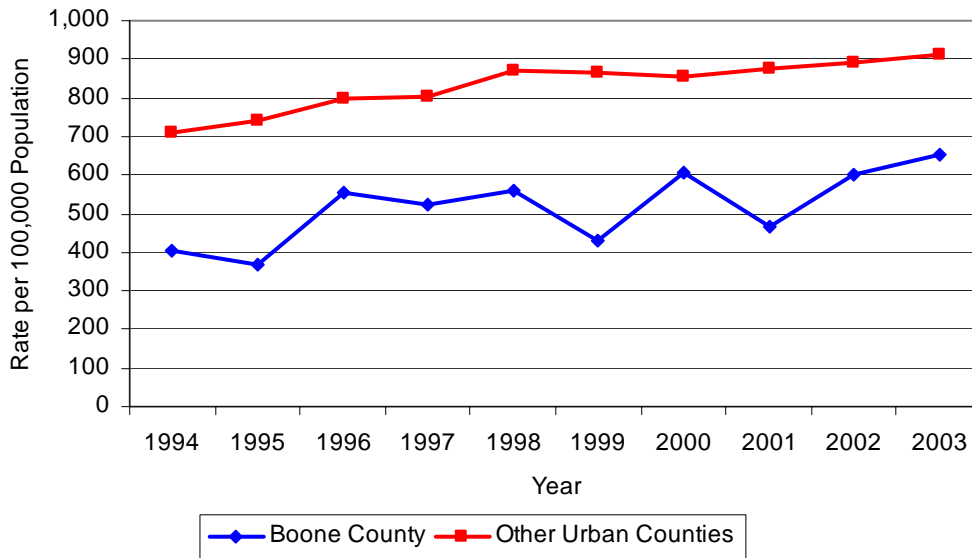


Source: Administrative Office of the Illinois Courts

Between 1994 and 2003, the felony-filing rate in Boone County increased 62 percent, from 403 to 654 cases per 100,000 population (Figure 9). The felony-filing rate in the other urban counties increased 28 percent during this period, from 712 to 910 cases per 100,000 population. In 2003, the felony-filing rate in Boone County was 28 percent lower than the rate in the other urban counties.

Figure 9

Felony Filing Rates in Boone and Other Urban Counties



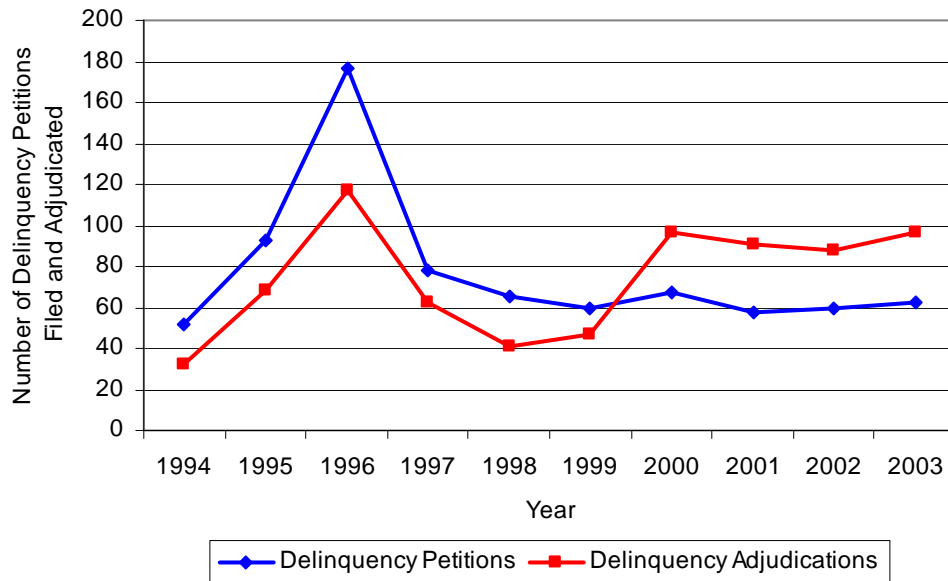
Source: Administrative Office of the Illinois Courts and U.S. Census Bureau data

Illinois’ juvenile court system differs in several key aspects from the adult criminal court system. One aspect revolves around the difference in treatment between juveniles and adults: the juvenile court process is somewhat less formal and adversarial; authorities are given much more latitude in determining the proper response to each case. Traditionally, the terminology used to describe juvenile proceedings has been less harsh than that used for the adult criminal process. For example, Illinois’ juvenile courts accept “petitions of delinquency” rather than misdemeanor or felony criminal complaints. However, pursuant to the Juvenile Court Reform Act of 1998, criminal court terms, such as “trial” and “sentencing,” have replaced the less harsh “adjudicatory hearing” and “dispositional hearing” terms.

Between 1994 and 2003, the number of reported juvenile delinquency petitions filed in Boone County increased 19 percent, from 52 to 62 (Figure 10). During the period analyzed, the number of reported delinquency adjudications more than tripled, from 32 in 1994 to 97 in 2003. The majority of cases not resulting in an adjudication were continued under supervision.

Figure 10

Juvenile Delinquency Petitions Filed and Adjudicated in Boone County



Source: Administrative Office of the Illinois Courts

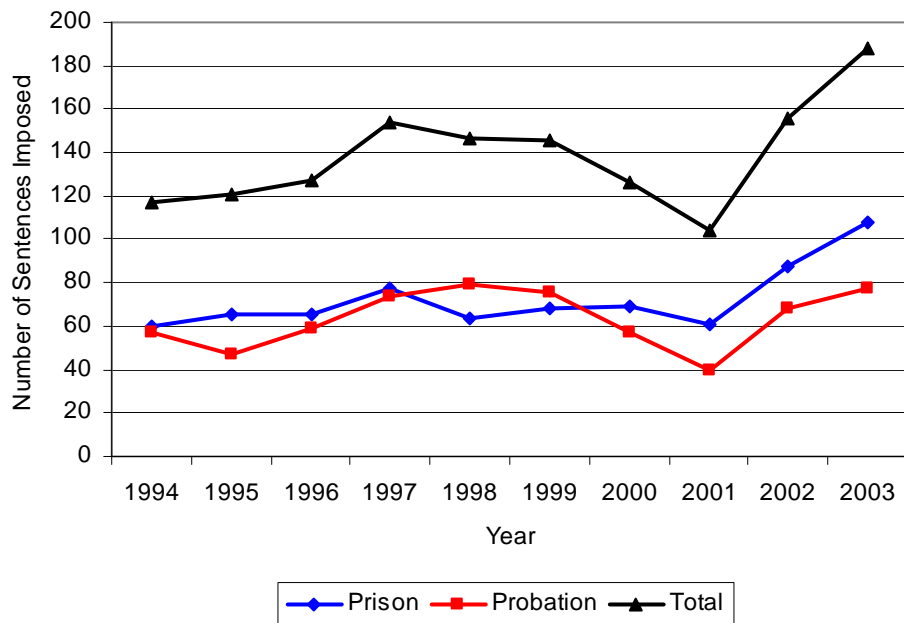
Between 1994 and 2003, the delinquency petition-filing rate in Boone County decreased 9 percent, from 1,369 to 1,247 per 100,000 juveniles. During the same period, the delinquency petition-filing rate in the other urban counties decreased 7 percent, from 1,890 to 1,753 petitions per 100,000 juveniles. In 2003, the delinquency petition-filing rate in Boone County was 29 percent lower than the rate in the other urban counties.

Anyone convicted of a felony in Illinois can be sentenced either to prison or probation, or receive a conditional discharge. A number of factors influence the type and length of sentence imposed on convicted felons, including the severity of the crime, the offender’s criminal and social history, safety of the community, and legislation affecting certain types of offenses. For some types of convictions a sentence to prison is required by state statute.

Between 1994 and 2003, the number of offenders convicted of a felony and sentenced in Boone County increased 61 percent, from 117 to 188 (Figure 11). While the number of convicted felons sentenced to probation during this period increased 35 percent, from 57 to 77, felony probation sentences decreased as a proportion of total sentences. In 1994, 49 percent of all convicted felons were sentenced to probation, compared to 41 percent in 2003. Between 1994 and 2003, the proportion of felons sentenced to prison increased from 51 percent in 1994 to 57 percent in 2003. In 2003, 2 percent of convicted felons were sentenced to something other than prison or probation.

Figure 11

**Sentences Imposed on Felons
Convicted in Boone County**

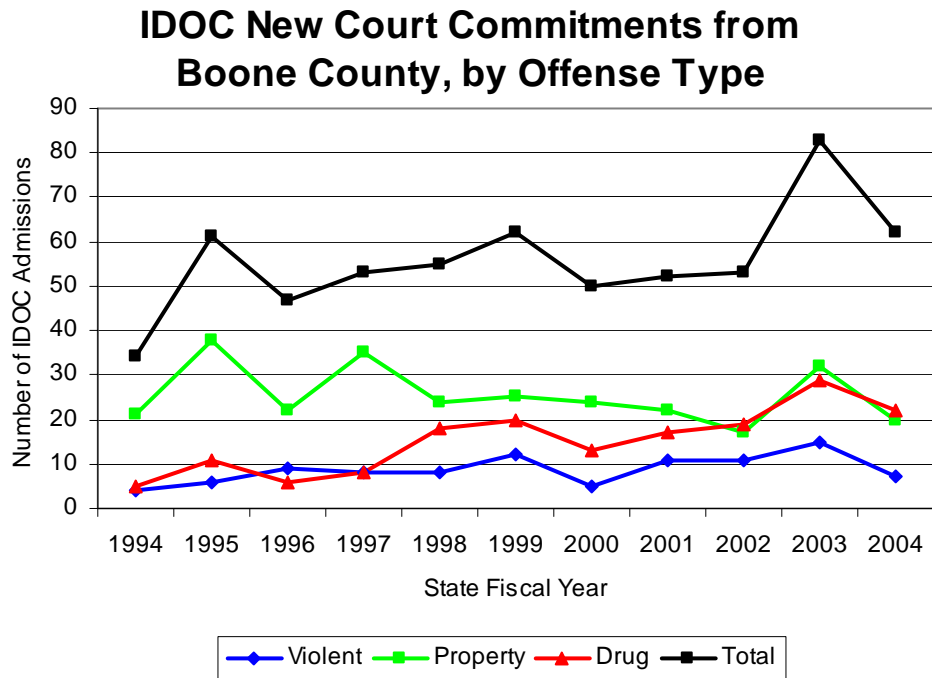


Source: Administrative Office of the Illinois Courts

Adult Prison Admissions from Boone County

Between State Fiscal Years (SFYs) 1994 and 2004, the number of admissions to the Illinois Department of Corrections' Adult Division from Boone County increased 82 percent, from 34 to 62 (Figure 12). During this period, the number of violent and drug offender admissions increased, while property offender admissions decreased. The number of violent offender admissions increased 75 percent between SFYs 1994 and 2004, from four to seven, while the number of drug offender admissions more than quadrupled, from five to 22. The number of property offenders admitted decreased, from 21 in SFY 1994 to 20 in SFY 2004.

Figure 12



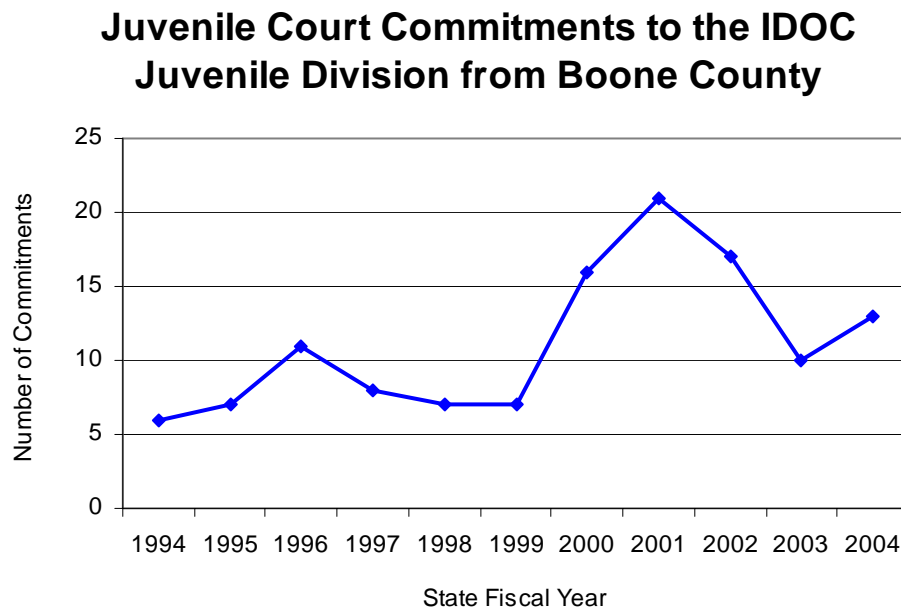
Source: Illinois Department of Corrections

In State Fiscal Year 2004, violent offenders accounted for 11 percent of all admissions from Boone County, while property offenders accounted for 32 percent and drug offenders accounted for 35 percent of all admissions. Between SFYs 1994 and 2004, drug offenders increased from 15 percent to 35 percent of all admissions from Boone County.

Juvenile Court Commitments to the Illinois Department of Corrections

The Illinois Department of Corrections' Juvenile Division provides long-term custody for youths, 13 to 17 years old, who have been found delinquent by the juvenile court and committed to the IDOC. Youths may remain in an IDOC juvenile facility until they are 21. Between SFYs 1994 and 2004, the number of court commitments to the IDOC's Juvenile Division from Boone County more than doubled, from six to 13 (Figure 13).

Figure 13



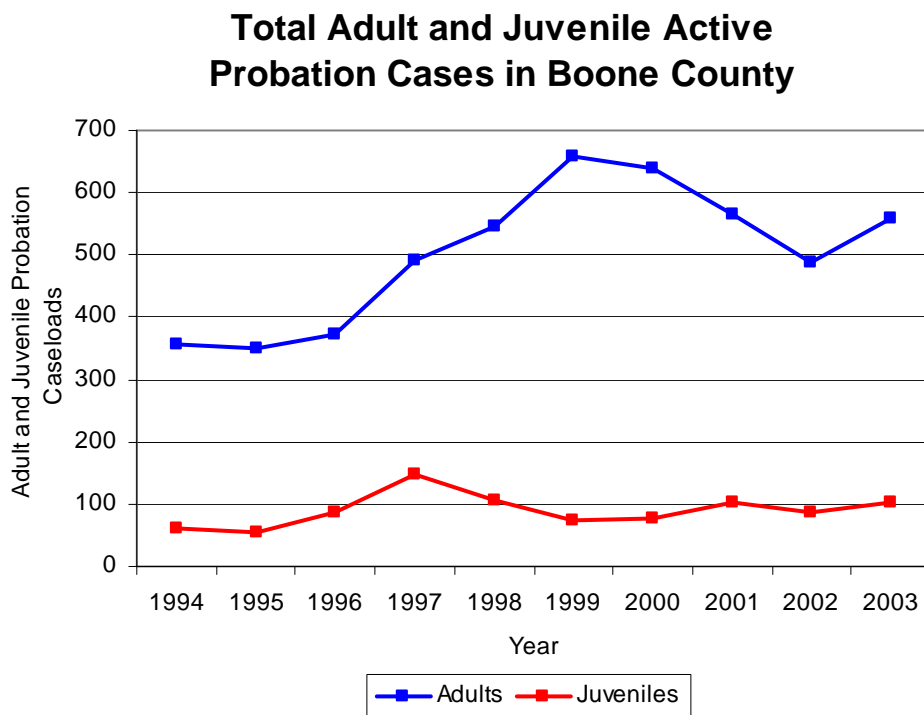
Source: Illinois Department of Corrections

In SFY 2004, Boone County's rate of commitments to the IDOC's Juvenile Division of 356 commitments per 100,000 juveniles was 21 percent higher than the rate of 294 commitments per 100,000 juveniles from the other urban counties.

Adult and Juvenile Probation Caseloads in Boone County

Between December 31, 1994 and December 31, 2003, the number of active adult probation cases in Boone County increased 57 percent, from 357 to 560 (Figure 14). In 2003, felony offenders accounted for 29 percent of Boone County's active adult probation caseload. Between 1994 and 2003, the number of juveniles supervised by the Boone County Juvenile Probation Department increased 72 percent, from 60 to 103. By comparison, the number of active adult probation cases in the other urban counties increased 28 percent between 1994 and 2003, while the juvenile probation caseloads increased 35 percent.

Figure 14



Source: Administrative Office of the Illinois Courts

The active adult probation caseload rate per 100,000 population in Boone County increased 19 percent between 1994 and 2003, from 1,012 to 1,205 cases per 100,000 population. During that same period, the active adult probation caseload rate increased 24 percent in the other urban counties, from 650 to 803 cases per 100,000 population. In 2003, the active adult probation caseload rate in Boone County was 50 percent higher than the rate in the other urban counties.

IV. Jail Populations in Boone County

Jail data in Illinois are collected by the Illinois Department of Corrections' Bureau of Inspections and Audits. As with court data, data are not available detailing the specific offenses for which offenders were held in county jails. In addition, between SFYs 1992 and 1994, the IDOC did not collect Illinois jail population data. Data presented for SFY 1994 were estimated by the Authority using the reported SFYs 1991 and 1995 data.

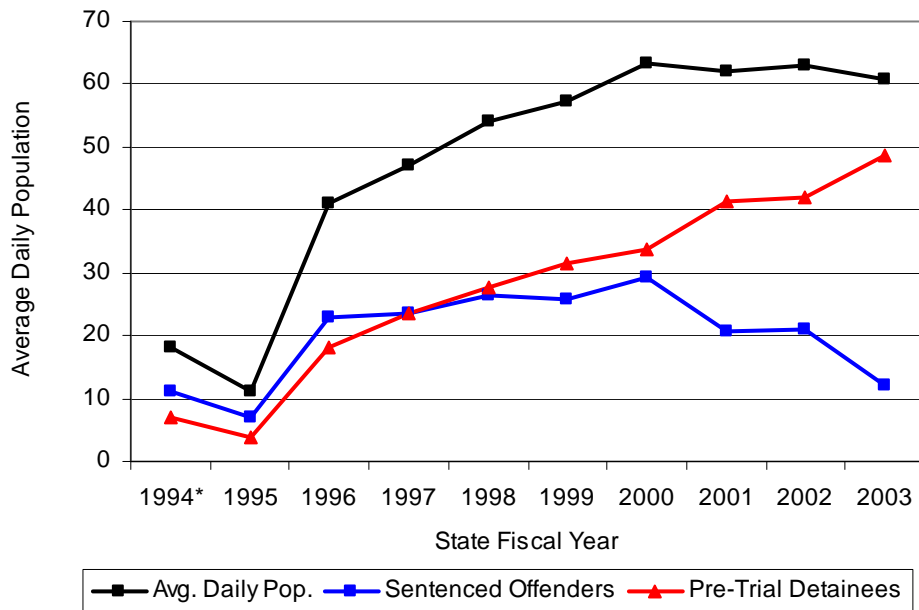
Average Daily Population of the Boone County Jail

The Boone County Jail was one of 91 county jails in operation in Illinois during State Fiscal Year 2003. There are 11 counties that did not operate a jail of their own; they rely on other counties to house their pretrial detainees and sentenced offenders at either a per-diem or contracted rate.

Between SFYs 1994 and 2003, the average daily population of the Boone County Jail more than tripled, from 18 to 61 inmates (Figure 15). During this period, pretrial detainees (those individuals who have been arrested for a crime and are awaiting trial) accounted for an increased percentage of the average daily population, from 39 percent in SFY 1994 to 80 percent in SFY 2003. On the other hand, sentenced offenders (those offenders who have been convicted and sentenced to the county jail) accounted for a decreased percentage, 61 percent in SFY 1994 compared to 20 percent in SFY 2003.

Figure 15

Average Daily Population of the Boone County Jail



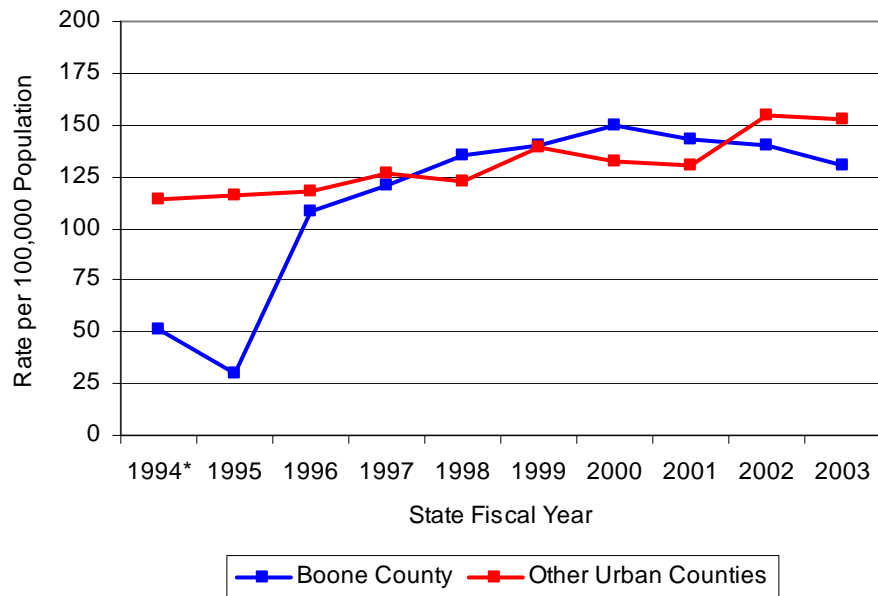
Source: Illinois Department of Corrections

*Information estimated by ICJIA

Between State Fiscal Years 1994 and 2003, the average daily jail population rate in Boone County more than doubled, from 51 to 131 per 100,000 population (Figure 16). During this same period, the average daily jail population rate in the other urban counties increased 35 percent, from 114 to 153 per 100,000 population. In SFY 2003, the Boone County Jail had an average daily jail population rate 15 percent lower than the rate in the other urban counties.

Figure 16

**Average Daily Jail Population Rates,
Boone and Other Urban Counties**



Source: ICJIA calculation using Illinois Department of Corrections and U.S. Census Bureau data

* Information estimated by ICJIA

V. Indicators of Child Abuse and Neglect in Boone County

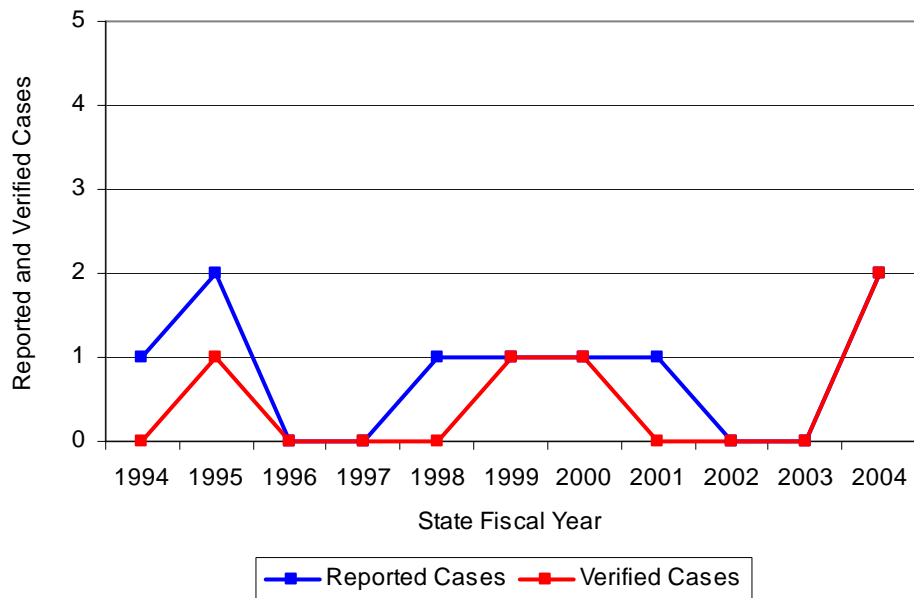
Substance-Exposed Infants in Boone County

Illinois continues to experience the effects of prenatal substance abuse. In Illinois, if a baby is born and thought to have been exposed to illegal substances or alcohol, either through observation by physicians or toxicology tests, the case is reported to the Illinois Department of Children and Family Services (DCFS). These cases are then investigated by DCFS to verify the child's prenatal exposure to either alcohol or illegal substances. Between State Fiscal Years 1994 and 2004, 96 of Illinois' 102 counties reported at least one case of a substance-exposed infant.

Between State Fiscal Years 1994 and 2004, there were nine reported cases of substance-exposed infants reported in Boone County, while five of those cases were verified as a substance-exposed infant case (Figure 17).

Figure 17

Substance-Exposed Infants, Reported and Verified Cases in Boone County



Source: Illinois Department of Children and Family Services

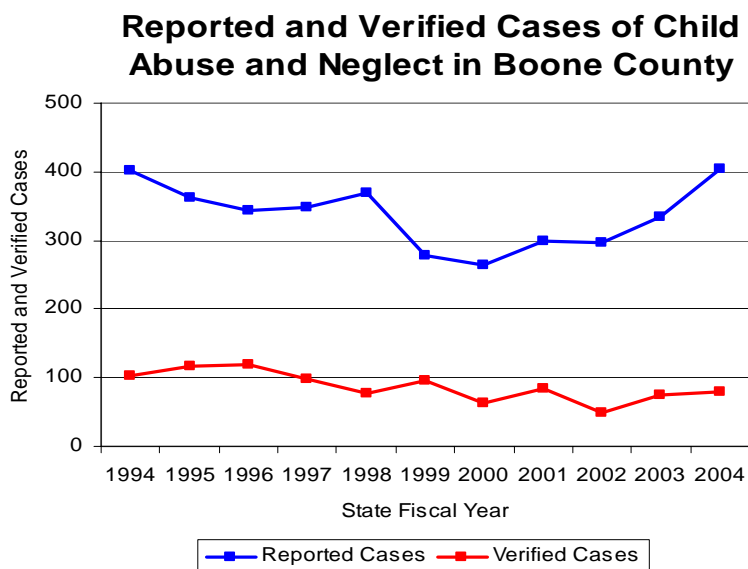
Between State Fiscal Years 1994 and 2004, the number of reported cases of substance-exposed infants in the other urban counties decreased 41 percent, from 363 to 213, while the number of verified cases of substance-exposed infants decreased 43 percent, from 342 to 194.

Child Abuse and Neglect Cases Reported and Verified in Boone County

Recent research on the relationship between maltreatment of youth and delinquency has revealed an important distinction between child maltreatment and adolescent maltreatment. Using data from the Office of Juvenile Justice and Delinquency Prevention’s Program of Research on the Causes and Correlates of Delinquency, researchers have found that youth that were abused during childhood (12 years of age or less) were no more likely to become delinquent than youth who were not abused, but youth who were abused during adolescence (after age 12) were significantly more likely to be delinquent.¹ While prior child abuse may not be linked to juvenile delinquency, studies examining prior child abuse have shown that childhood victimization may be linked to other poor outcomes in youth, including low academic achievement, teenage parenthood (particularly for females), drug use, and symptoms of mental illness.² Additionally, research examining adolescent victimization (including physical and sexual assaults) and adult outcomes has found a correlation between previous victimization and substance abuse, depression, and post-traumatic stress disorder in adulthood.³ In Illinois, DCFS investigates reported cases of child abuse.

Between State Fiscal Years 1994 and 2004, the number of child abuse and neglect cases reported in Boone County increased slightly, from 403 to 405 (Figure 18). During that same period, 962 cases, or 26 percent of all cases reported, were verified by a DCFS investigation. Verified cases of child abuse and neglect in Boone County decreased 23 percent between SFYs 1994 and 2004, from 102 to 79.

Figure 18



Source: Illinois Department of Children and Family Services

¹ Thornberry, Terence P., David Huizinga and Rolf Loeber. 2004. “The Causes and Correlates Studies: Findings and Policy Implications.” *Juvenile Justice Journal*. 9:1. Washington, D.C. : U.S. Government Printing Office.

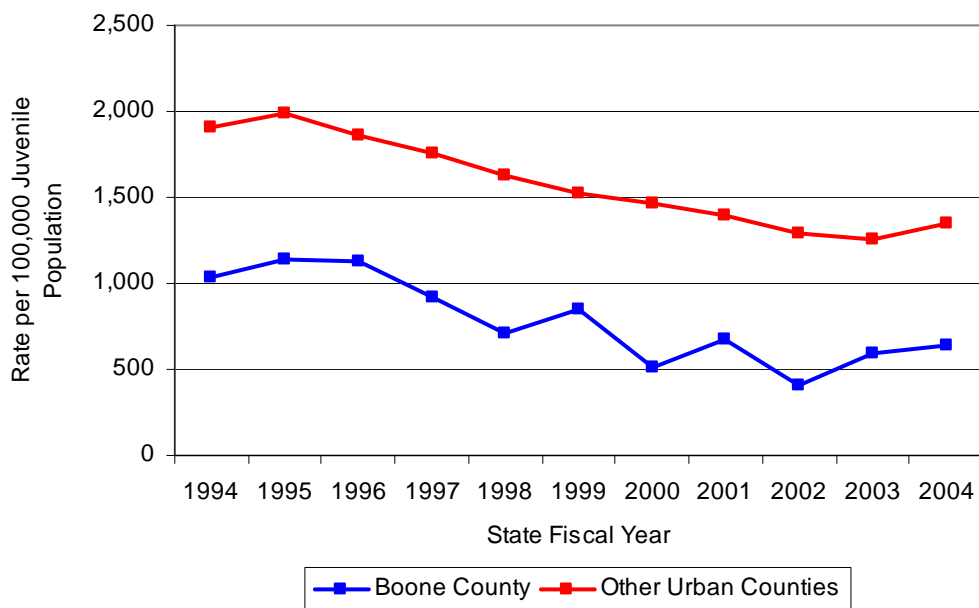
² Kelly, B., Thornberry, T. and Smith, C. 1997. “In the Wake of Childhood Maltreatment.” *Juvenile Justice Bulletin*. Washington, D.C.: U.S. Government Printing Office.

³ Menard, S. 2002. 2002. “Short and Long-Term Consequences of Adolescent Victimization.” *Youth Research Bulletin*. Washington, D.C.: U.S. Government Printing Office.

Between State Fiscal Years 1994 and 2004, the rate of verified cases of child abuse and neglect in Boone County decreased from 1,039 to 635 per 100,000 juveniles, a 39 percent decrease. During the same period, the rate of verified child abuse and neglect cases decreased 29 percent in the other urban counties, from 1,906 to 1,349 per 100,000 juveniles (Figure 19). In SFY 2004, the rate of verified cases of child abuse and neglect in Boone County was 53 percent lower than in the other urban counties.

Figure 19

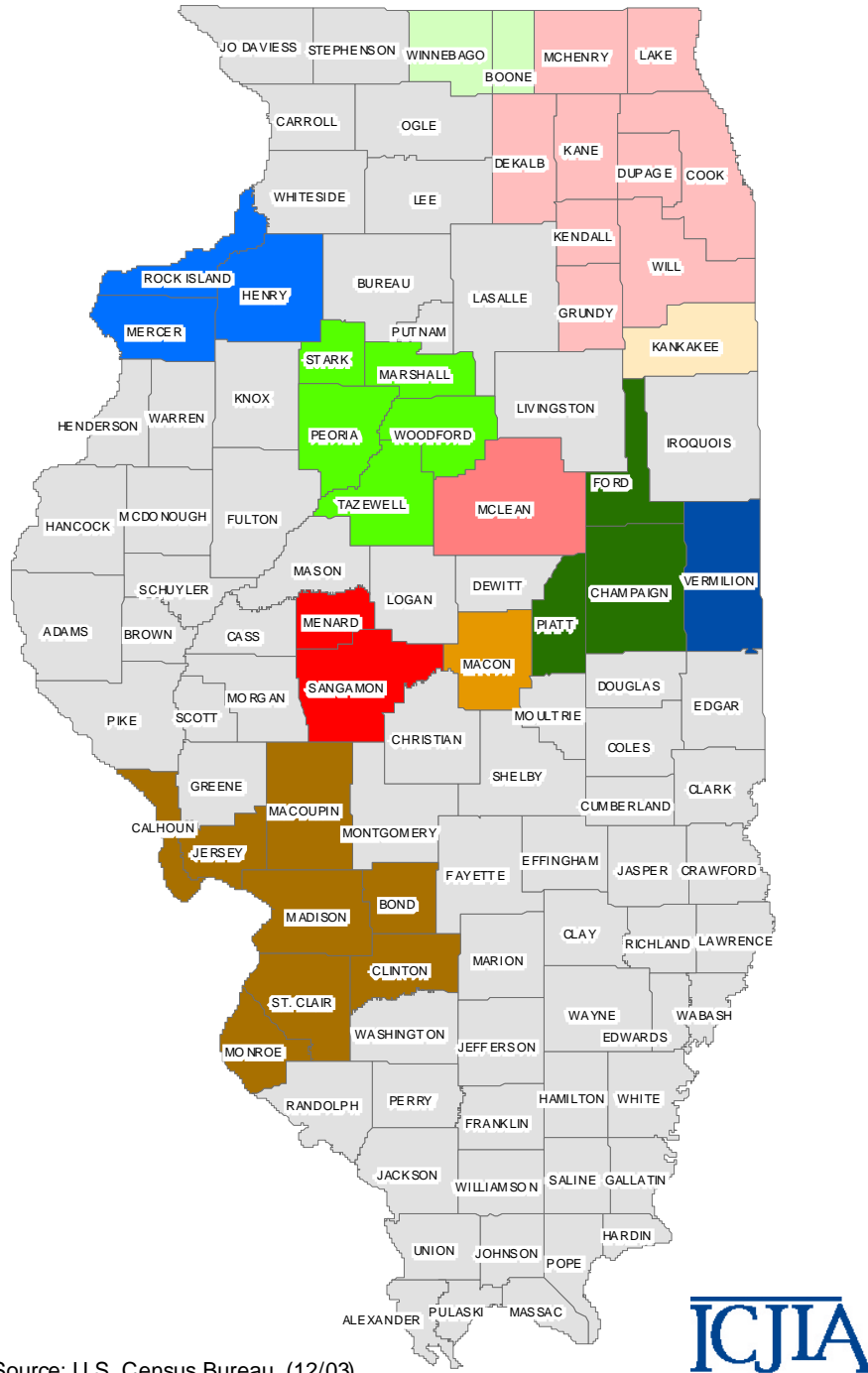
Rate of Verified Cases of Child Abuse and Neglect, Boone and Other Urban Counties



Source: ICJIA calculation using Illinois Department of Children and Family Services and U.S. Census Bureau data

VI. Appendix I (Map of Illinois Counties within a Metropolitan Statistical Area)

Illinois Counties, by Metropolitan Statistical Area*



Source: U.S. Census Bureau, (12/03)



VII. Bibliography

Administrative Office of the Illinois Courts, *Annual Report to the Supreme Court of Illinois*. 1994 through 2003 reports, Springfield, Illinois.

Administrative Office of the Illinois Courts' Probation Division, *Statewide Probation Data Report*. 1994 through 2003 reports, Springfield, Illinois.

Illinois Department of Children and Family Services, *Child Abuse/Neglect Statistics Report*. State Fiscal Years 1994 through 2004 reports, Springfield, Illinois.

Illinois Department of Corrections. *Jail and Detention Statistics and Information*. State Fiscal Years 1995 through 2003 reports, Springfield, Illinois.

Illinois Department of Corrections. Research and Planning Division, Springfield, Illinois.

U.S. Department of Commerce, Bureau of the Census, *Illinois Population Estimates*. 1994-2003, Washington, D.C.

Illinois State Police, *Crime in Illinois*. 1994 through 2003 reports, Springfield, Illinois.

Illinois State Police, *Drug Statistics Report*. Monthly reports, January 1994 through December 2003, Springfield, Illinois.



120 S. Riverside Plaza, Suite 1016
Chicago, Illinois 60606
Telephone: 312-793-8550
TDD: 312-793-4170
Fax: 312-793-8422
www.icjia.state.il.us



Illinois Criminal Justice Information Authority

Rod R. Blagojevich, Governor
Sheldon Sorosky, Chairman
Lori G. Levin, Executive Director